

# SECTION 4.1\_KSEP

## EMERGENCY RELIEF VALVE PRESSURE RELIEF

### INTRODUCTION

**The model KSEP** is designed to provide emergency pressure relief for storage tanks when exposed to overpressures that are not handled by standard tank vents. These vents provide the capacity to meet API standard 2000 for emergency venting due to fire exposure when properly sized. These covers also provide quick easy access for tank inspection and maintenance.

### Setting Pressure

KSEP Permanent Setting	Min. 50 mmW.C ~ Max. 700 mmW.C
------------------------	--------------------------------

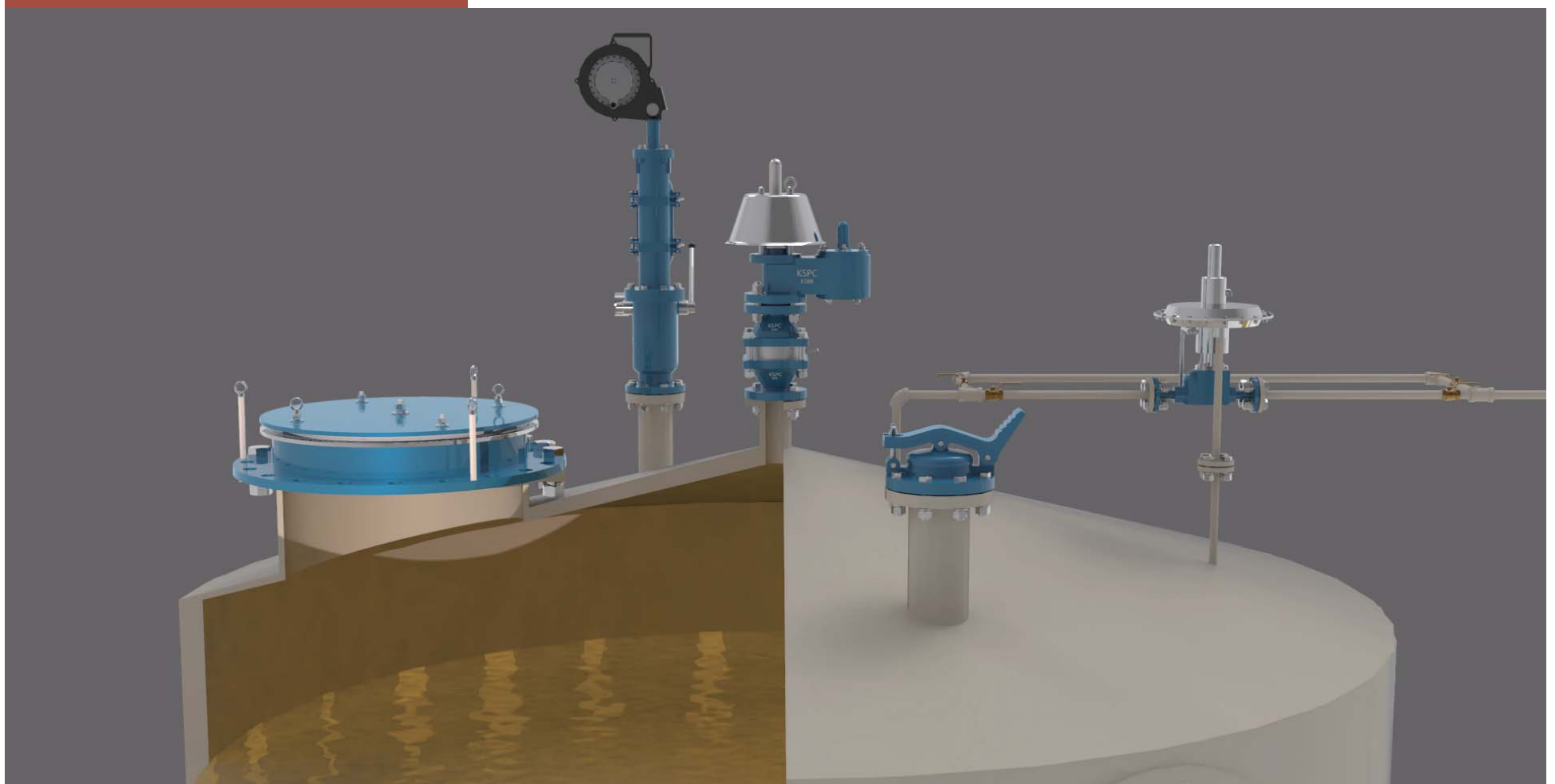
**Body Materials** Aluminium, Carbon Steel, SS304 and SS316 with various trims  
(Different materials available on request)

**Sizes range** DN 400, 450, 500 and DN 600 with ASME 150Lb or API 650 flanges  
(Different connections available on request)

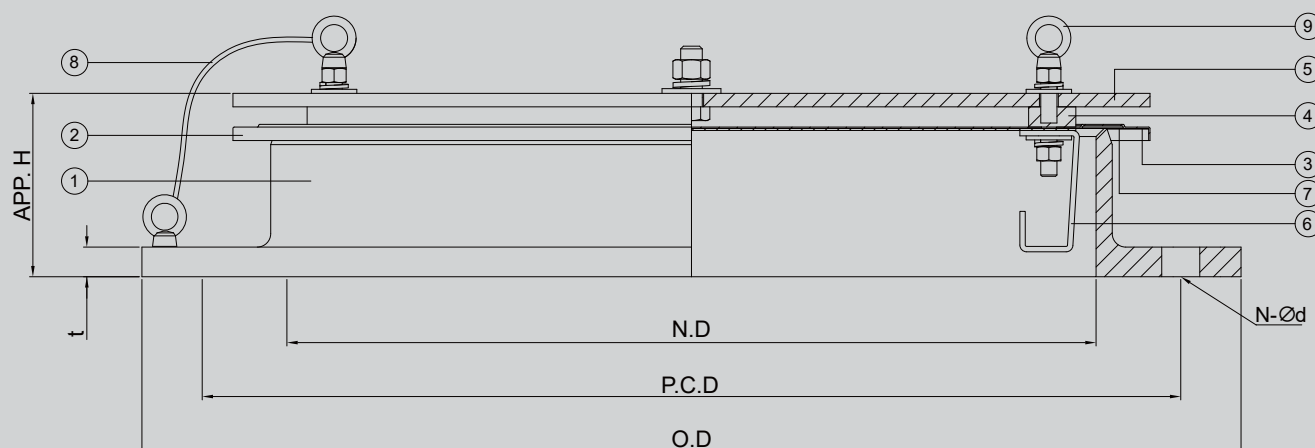
**Rules & Certifications** API 2000 & ATEX / KFI

**Optimum / optional Design & Arrangements** Steam jacket type, Steam Tracing type, Proximity type, Teflon Coating/Lining type

### APPLICATION



## OUTLINE DRAWING



## DIMENSION TABLE

SIZE		16"	18"	20"	24"
N.D		400	450	500	600
O.D	API 650	-	-	650/660	750/762
	ASME 150#	595	635	700	815
App. H	MIN.	115	115	115	115
	MAX.	160	180	180	200
P.C.D	API 650	-	-	596.9 / 590 / 597	698.5 / 690 / 699
	ASME 150#	539.7	577.8	635	749.3
N-Ød	API 650	-	-	16-Ø19 / 16-Ø20	20-Ø19 / 20-Ø20
	ASME 150#	16-Ø29	16-Ø32	20-Ø32	20-Ø35
t		18	18	18	18

**NOTE** Certified dimensions available upon request (STD : API650).

## COMPONENT MATERIAL

ITEM NO	COMPONENT	BODY	ALUMINIUM	CARBON STEEL	SS304	SS316
		TRIM	SS304	SS304	SS304	SS316L
1	BODY		B26-319.F	A216-WCB	A351-CF8	A351-CF8M
2	DISC		SS304	SS304	SS304	SS316L
3	DISC PLATE		SS304	SS304	SS304	SS316L
4	BASE RING		CARBON STEEL	CARBON STEEL	CARBON STEEL	CARBON STEEL
5	LOADING WEIGHT		CARBON STEEL	CARBON STEEL	CARBON STEEL	CARBON STEEL
6	GUIDE		SS304	SS304	SS304	SS316L
7	DIAPHGRAM		FEP+PTFE (NOTE)			
8	EARTH WIRE		SS304			
9	LIFTING EYE NUT		SS304			

**NOTE** Other materials are available upon request.