



## SECTION 4.5\_KSEPW

# SEMI LIQUID SEAL EMERGENCY PRESSURE RELIEF VALVE

### INTRODUCTION

**The model KSEPW** is designed to provide emergency pressure relief for storage tanks when exposed to overpressures that are not handled by standard tank vents. These vents provide the capacity to meet API standard 2000 for emergency venting due to fire exposure when properly sized. And it provides quick easy access for tank inspection and maintenance. And also designed to be Cushioned Air Seating, Teflon(FEP+PTFE) diaphragm are standard. The excessive pressure over 75% of set point builds up to 90% of set point, the Liquid (Silicon oil) catch up the Leakage and meet bubble tight (no leakage) at 90% of set pressure. It is designed to be self closing under normal operation by inside GUIDE and the restraining cables to connect the Cover A'ssy and Flange.

### Setting Pressure

KSEPW Permernent Setting	Min. 50 mmW.C ~ Max. 700 mmW.C
--------------------------	--------------------------------

**Body Materials** Carbon Steel, SS304 and SS316 with various trims  
(Different materials available on request)

**Sizes range** DN 400, 500 and DN 600 with ASME 150Lb or API 650 flanges  
(Different connections available on request)

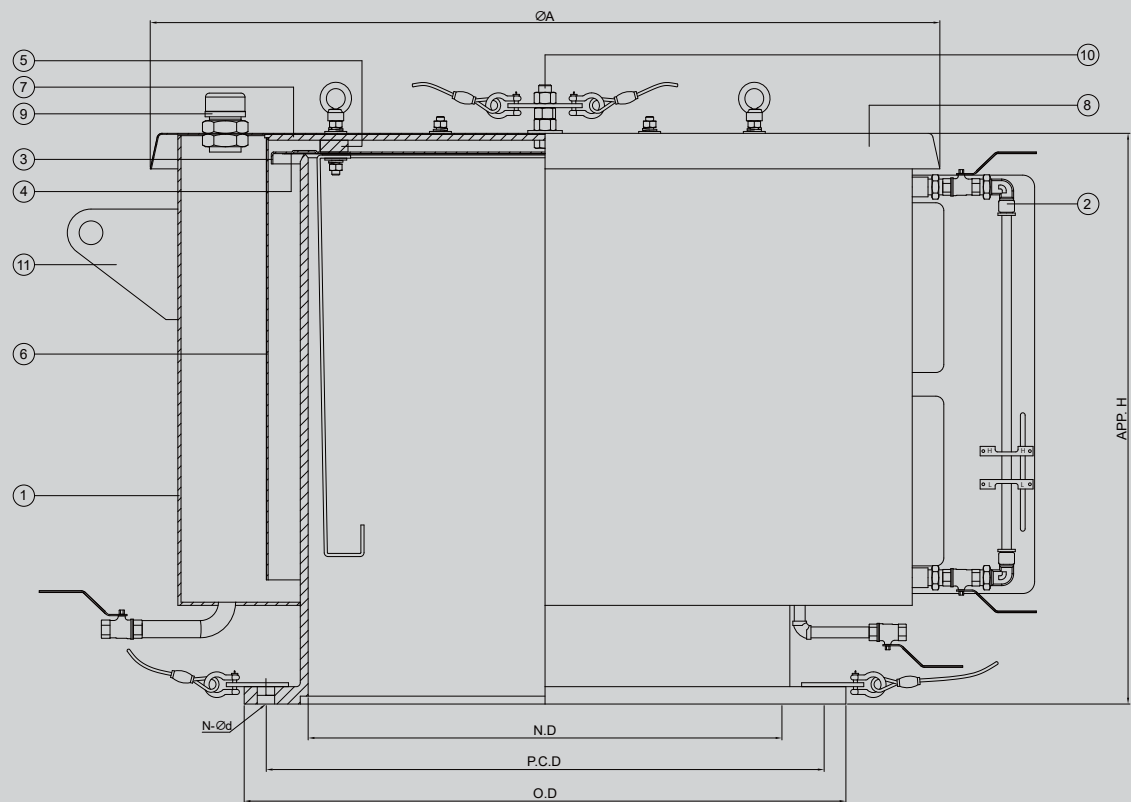
**Rules & Certifications** API 2000

**Optimum / optional Design & Arrangements** Steam jacket type, Proximity type

### APPLICATION



## OUTLINE DRAWING



## DIMENSION TABLE

SIZE		16"	20"	24"
N.D		400	500	600
ØA		800	920	1000
O.D	API 650	-	650 / 660	750 / 762
	ASME 150#	595	700	815
P.C.D	API 650	-	596.9 / 590 / 597	698.5 / 690 / 699
	ASME 150#	539.7	635	749.3
N-Ød	API 650	-	16-Ø19/16-Ø20	20-Ø19/20-Ø20
	ASME 150#	16-Ø29	20-Ø32	20-Ø35
App. H	MIN.	450	450	500
	MAX.	The higher setting pressure, the higher KSEPW's height to be designed		

**NOTE** Certified dimensions available upon request (STD : API650).

## COMPONENT MATERIAL

ITEM NO	COMPONENT	BODY	CARBON STEEL	SS304	SS316
		TRIM	SS304	SS304	SS316/SS316L
1	BODY		CARBON STEEL	SS304	SS316
2	LEVEL GAUGE		SS304 + PFA	SS304 + PFA	SS316 + PFA
3	DISC		SS304	SS304	SS316L
4	DIAPHRAGM		FEP+PTFE (NOTE)		
5	BASE RING		CARBON STEEL	SS304	SS316L
6	INSIDE COVER		CARBON STEEL	SS304	SS316L
7	LOADING WEIGHT		CARBON STEEL	SS304	SS316L
8	WEATHER HOOD		CARBON STEEL	SS304	SS316L
9	OIL CAP		CARBON STEEL	SS304	SS316
10	BOLT/NUT		SS304	SS304	SS316
11	LIFTING LUG		CARBON STEEL	SS304	SS316

**NOTE** Other materials are available upon request.